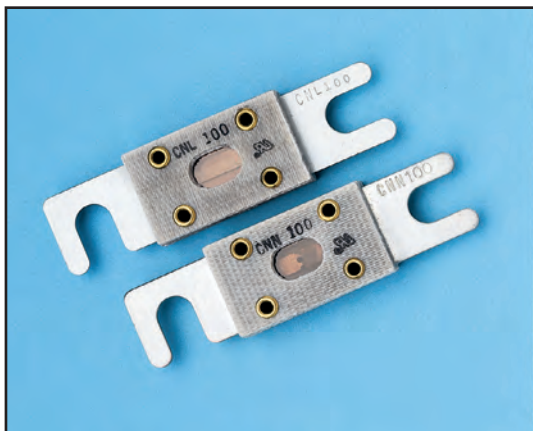
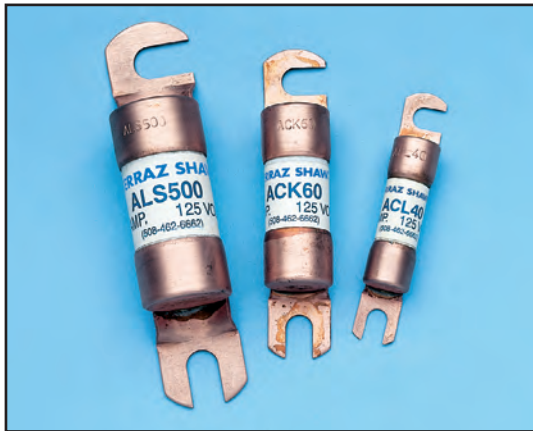


FORKLIFT TRUCK FUSES

SPECIAL PURPOSE



FORKLIFT TRUCK FUSES

Ferraz Shawmut forklift truck and battery isolator fuses are specially designed for the heavy duty loads associated with DC battery powered equipment such as forklift trucks, hand trucks, motorized work platforms, and other DC battery operated systems. Rugged construction and stud mounted bolt-in design assure a long life in adverse conditions for these fuses.

This expanded line of Forklift Truck Fuses can fulfill virtually all of your heavy duty circuit protection needs up to 125V AC or DC. The round body ACK, ACL and ALS fuses combine higher voltage ratings and more ampere ratings with higher interrupting ratings. The flat CNL and CNN style fuses have a lower voltage rating but are also AC and DC, more space saving and have visual “see-thru” indication to show when they have operated.

Features/Benefits

- **All fuses** are AC and DC rated
- **Expanded Ampere Ratings**
- **Time Delay and General Purpose** types
- **Link is visible** through window (CNL/CNN)

HIGHLIGHTS:

- AC/DC Ratings
- Embossed Catalog Nos.
- Stud Mounted
- Time Delay - ACK
- General Purpose - ACL,ALS

APPLICATIONS:

- Forklift Trucks
- Battery Hand Trucks
- Motorized Work Platforms
- Battery Systems

Forklift Truck Fuse Fuse Blocks

FUSE	FUSE BLOCK
ACK(70-100)	P243C
ACL(70-120)	P243E
CNL	FTFH
CNN	FTFH

Ratings

- **ACK:** 1-400 Amperes
125VAC, 10kA I.R.
125VDC, 10kA I.R.
- **ACL:** 30-120 Amperes
125VAC, 10kA I.R.
125VDC, 10kA I.R.
- **ALS:** 100-500 Amperes
125VAC, 10kA I.R.
125VDC, 10kA I.R.
- **CNL:** 35-500 Amperes
80V AC/DC, 2500A I.R.
- **CNN:** 10-800 Amperes
130VAC, 80VDC, 2500A I.R.

Approvals

- UL Recognized Components (All Products)
File #E60314



FORKLIFT TRUCK FUSES

SPECIAL PURPOSE

ACK Fuse

AMPERE RATING	CATALOG NUMBER	AMPERE RATING	CATALOG NUMBER	AMPERE RATING	CATALOG NUMBER	AMPERE RATING	CATALOG NUMBER
1A	ACK1	20A	ACK20	70A	ACK70	160A	ACK160
2A	ACK2	25A	ACK25	80A	ACK80	175A	ACK175
3A	ACK3	30A	ACK30	90A	ACK90	200A	ACK200
5A	ACK5	35A	ACK35	100A	ACK100	225A	ACK225
6A	ACK6	40A	ACK40	120A	ACK120	250A	ACK250
10A	ACK10	50A	ACK50	140A	ACK140	300A	ACK300
15A	ACK15	60A	ACK60	150A	ACK150	400A	ACK400

ACL Fuse

AMPERE RATING	CATALOG NUMBER	AMPERE RATING	CATALOG NUMBER
30A	ACL30	70A	ACL70
35A	ACL35	80A	ACL80
40A	ACL40	90A	ACL90
50A	ACL50	100A	ACL100
60A	ACL60	120A	ACL120

ALS Fuse

AMPERE RATING	CATALOG NUMBER	AMPERE RATING	CATALOG NUMBER
100A	ALS100	300A	ALS300
150A	ALS150	350A	ALS350
175A	ALS175	400A	ALS400
200A	ALS200	450A	ALS450
225A	ALS225	500A	ALS500
250A	ALS250	—	—

CNL/CNN:

AMPERE RATING	CATALOG NUMBER	AMPERE RATING	CATALOG NUMBER	AMPERE RATING	CATALOG NUMBER	AMPERE RATING	CATALOG NUMBER
10A	—	CNN10	130A	CNL130	—	350A	CNL350 CNN350
35A	CNL35	CNN35	150A	CNL150	CNN150	400A	CNL400 CNN400
40A	CNL40	CNN40	175A	CNL175	CNN175	500A	CNL500 CNN500
50A	CNL50	CNN50	200A	CNL200	CNN200	600A	CNL600 CNN600
60A	CNL60	CNN60	225A	CNL225	CNN225	675A	CNL675 —
80A	CNL80	CNN80	250A	CNL250	CNN250	700A	— CNN700
90A	—	CNN90	275A	CNL275	CNN275	750A	CNL750 —
100A	CNL100	CNN100	300A	CNL300	CNN300	800A	— CNN800
125A	CNL125	CNN125	325A	CNL325	CNN325	—	—

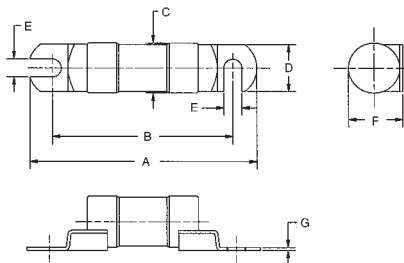


Figure 1

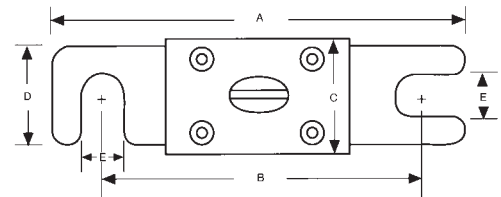


Figure 2

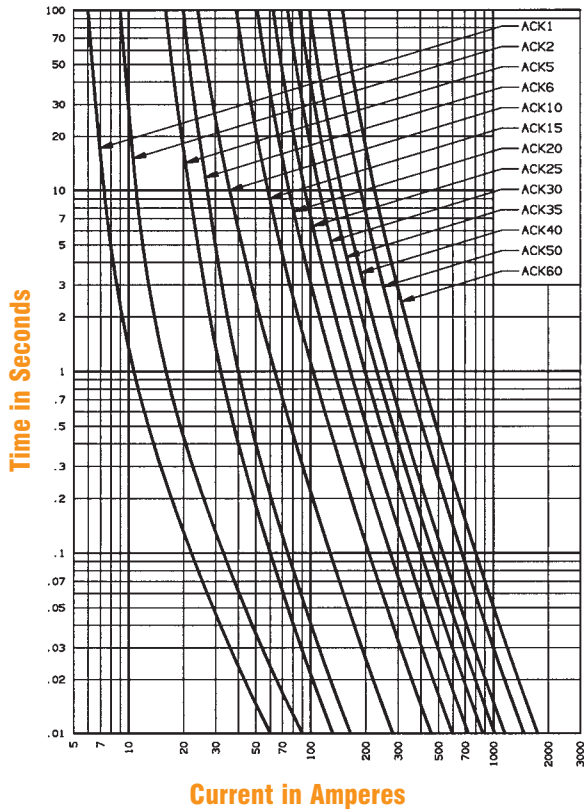
Dimensions

CATALOG NUMBER	OUTLINE FIGURE	A	B	C	D	E	F	G
		In. (mm)	In. (mm)	In. (mm)	In. (mm)	In. (mm)	In. (mm)	In. (mm)
ACK 1-30	1	3.07 (77.9)	2.5 (63.5)	.56 (14.3)	.5 (12.7)	.28 (7.1)	.593 (15)	.03 (.8)
ACK 35-60	1	3.74 (95)	3 (76.2)	.81 (20.6)	.75 (19.1)	.34 (8.7)	.86 (21.8)	.047 (1.2)
ACK 70-100	1	4.46 (113.4)	3.5 (88.9)	1.06 (26.9)	1 (25.4)	.38 (9.5)	1.12 (28.5)	.06 (1.6)
ACK 120-200	1	4.72 (119.8)	3.75 (95.4)	1.06 (26.9)	1 (25.4)	.38 (9.5)	1.12 (28.5)	.06 (1.6)
ACK 225-400	1	4.71 (119.7)	3.75 (95.4)	1.06 (26.9)	1 (25.4)	.38 (9.5)	1.12 (28.5)	.06 (1.6)
ACL 30-60	1	3.07 (77.9)	2.5 (63.5)	.56 (14.3)	.5 (12.7)	.28 (7.1)	.593 (15)	.03 (.8)
ACL 70-120	1	3.49 (88.6)	2.75 (69.9)	.81 (20.6)	.75 (19.1)	.34 (8.7)	.86 (21.8)	.047 (1.2)
ALS 100-500	1	4.71 (119.7)	3.75 (95.4)	1.06 (26.9)	1 (25.4)	.38 (9.5)	1.12 (28.5)	.06 (1.6)
CNL/CNN	2	3.188 (80.9)	2.44 (61.9)	.89 (22.6)	.75 (19.0)	.34 (8.7)	—	—

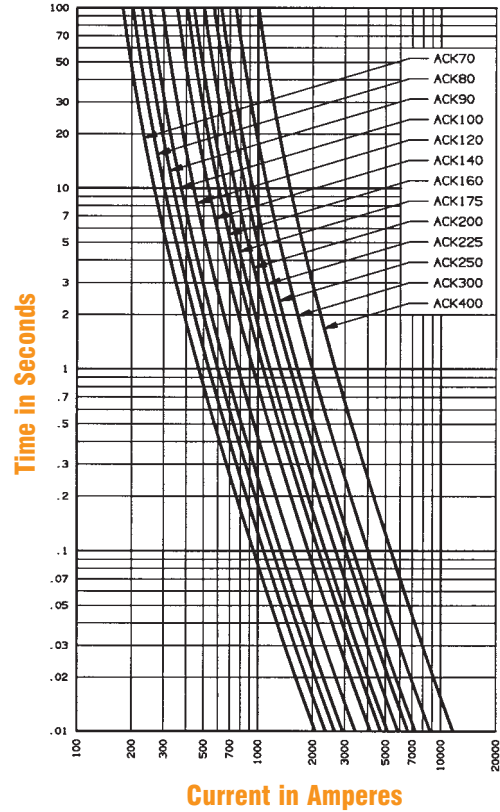
FORKLIFT TRUCK FUSES

SPECIAL PURPOSE

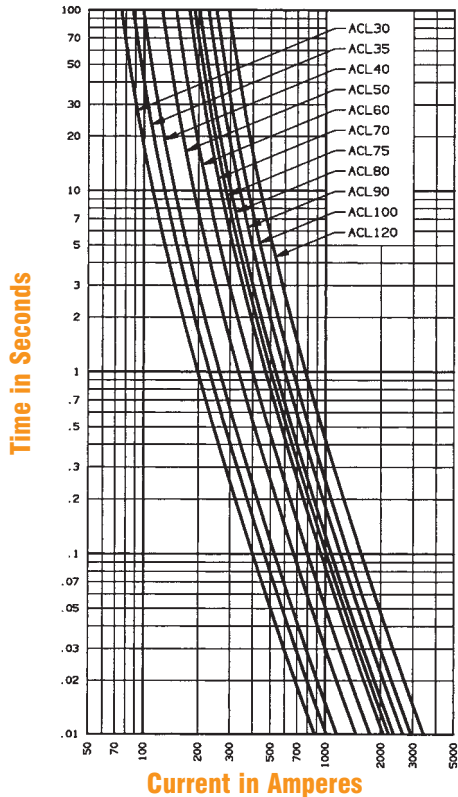
Melting Time – Current Data – ACK1–60



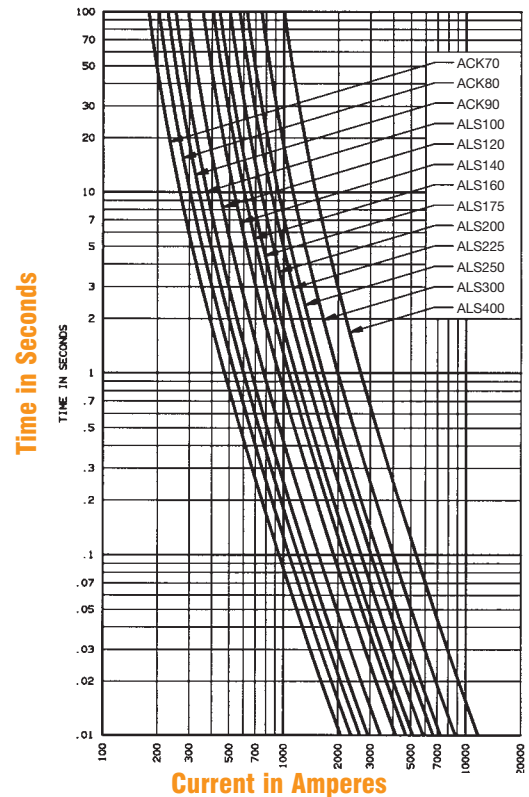
Melting Time – Current Data – ACK70–400



Melting Time – Current Data – ACL30–120



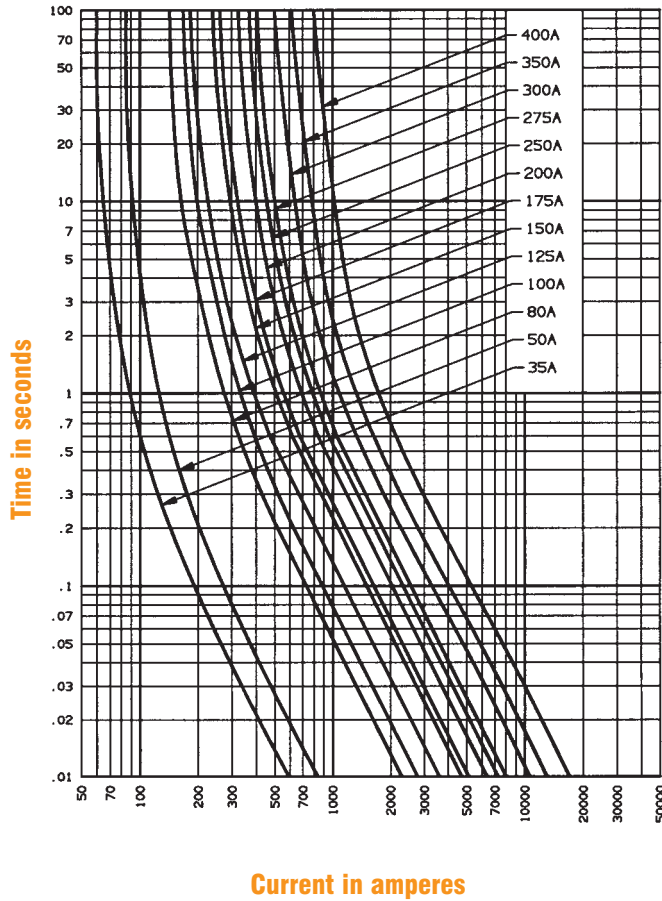
Melting Time – Current Data – ALS100–500



FORKLIFT TRUCK FUSES

SPECIAL PURPOSE

Melting Time – Current Data – CNL35–400



Melting Time – Current Data – CNN50–800

